

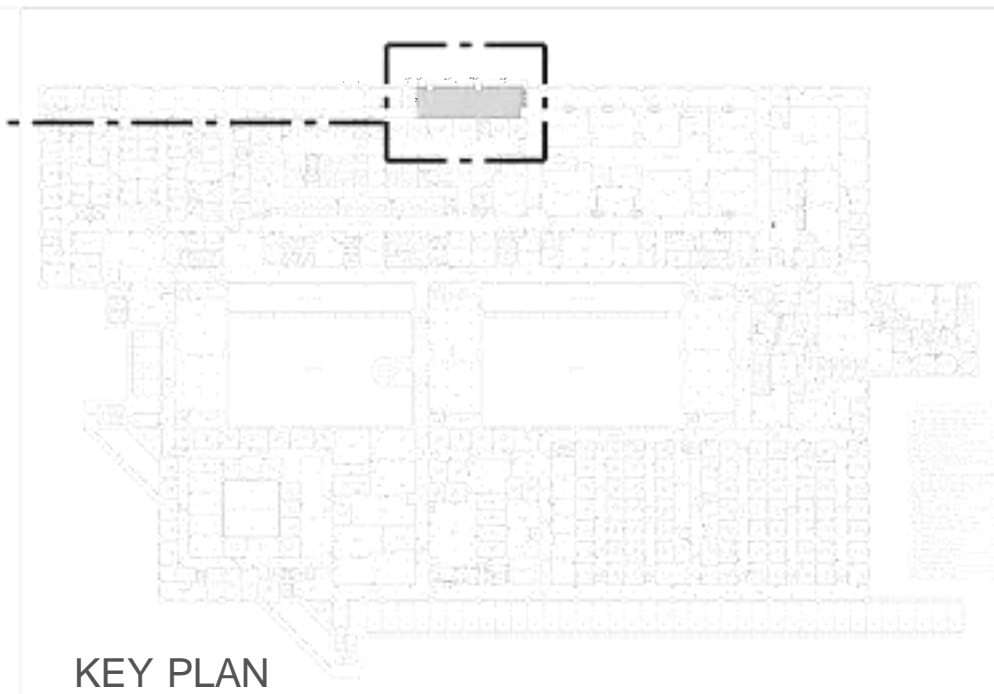








AS-BUILT DRAWING



## KEY PLAN

AS BUILT DRAWING

[illegible]

OWNER:

NELLIS AFB, NEVADA  
99TH MEDICAL GROUP  
BUILDING 1300- AIR FORCE  
MEDICAL CENTER

GENERAL CONTRACTOR:



LICENSE NUMBER : B#81273

AS BUILT DRAWINGS DATE: 26 JANUARY, 2024

NOTES:

FALSE CEILING

## SECOND FLOOR REFERENCE LAYOUT PLAN

Project Number	1002-27
Date	26 JANUARY, 2024
Drawn By	MA
Checked By	SA

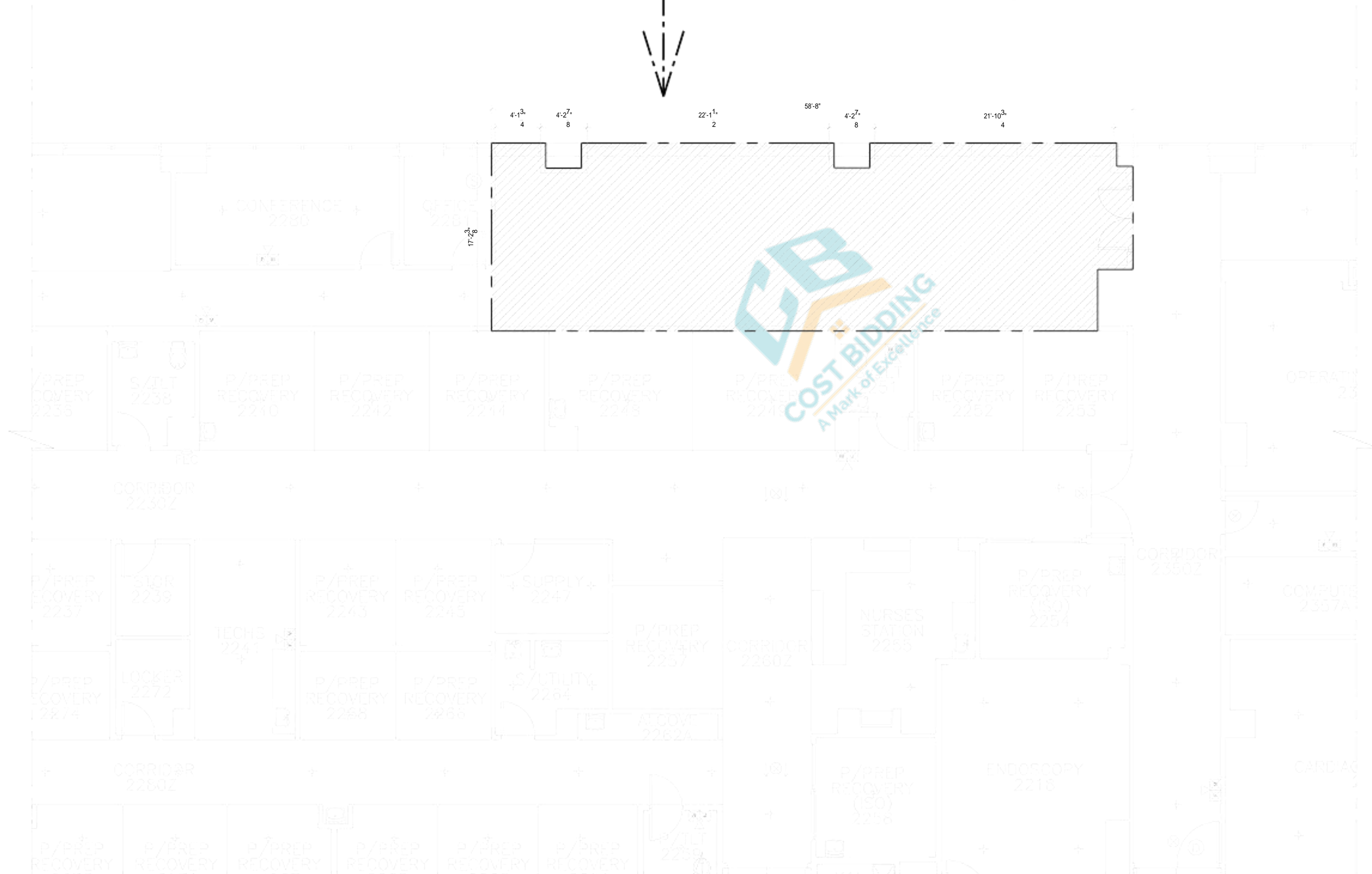
A-01

Scale  $1/4"=1'-0"$



AS-BUILT DRAWING


KEY PLAN



SECOND FLOOR  
NEW CONSTRUCTION

Date	
Description	
No.	

OWNER:  
  
NELLIS AFB,NEVADA  
99TH MEDICAL GROUP  
BUILDING 1300- AIR FORCE  
MEDICAL CENTER

GENERAL CONTRACTOR:  
  
LICENSE NUMBER : B#81273  
  
AS BUILT DRAWINGS DATE: 26 JANUARY,2024

NOTES:

FALSE CEILING

SECOND FLOOR PLAN  
NEW CONSTRUCTION

Project Number 1002-27  
Date 26 JANUARY,2024  
Drawn By MA  
Checked By SA

A-02

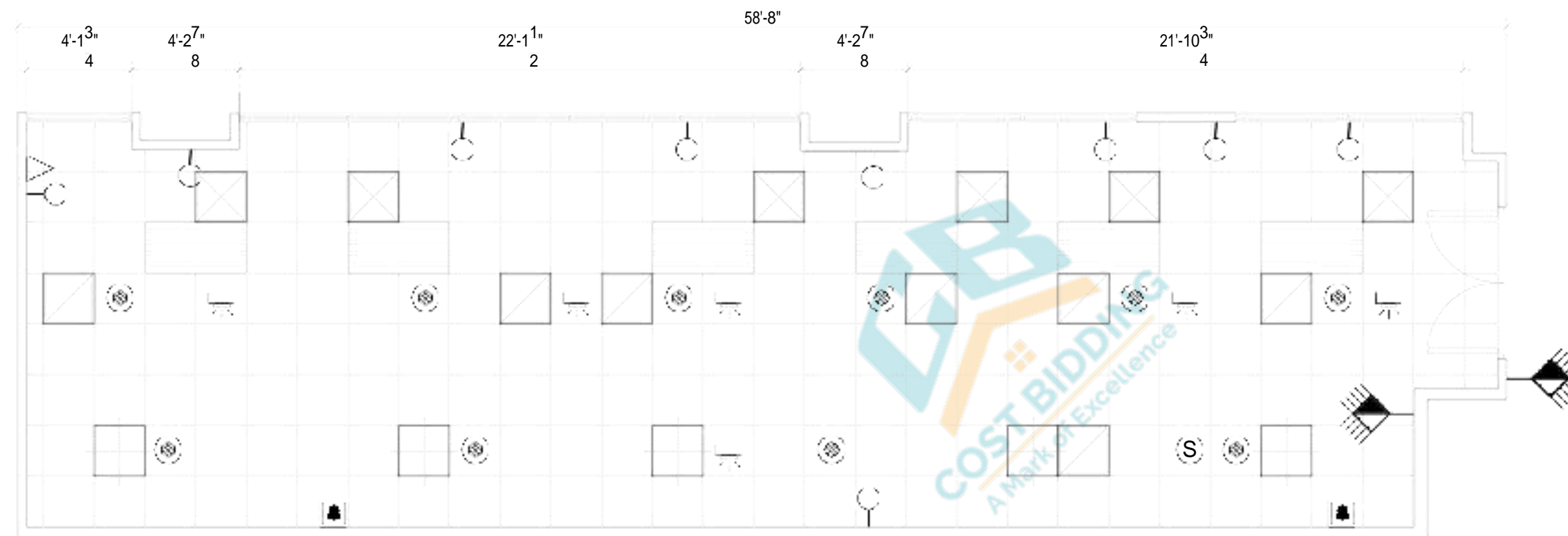
Scale 1/4"=1'-0"



AS-BUILT DRAWING



## KEY PLAN



## SECOND FLOOR PLAN

### LEGEND

RETURN AIR



SPRINKLER



2x2 LIGHT



SPEAKER



ELECTRICAL OUTLET



DUCT



FIRE ALARM



2X4 LIGHT

DATE OUTLET



FIRE ALARM



WAIVE TO OPEN ACUATO



DOUBLE DOOR

## SECOND FLOOR FALSE CEILING PLAN

[illegible]

OWNER:

NELLIS AFB, NEVADA

99TH MEDICAL GROUP  
BUILDING 1300- AIR FORCE  
MEDICAL CENTER

GENERAL CONTRACTOR:



LICENSE NUMBER : B#81273

AS BUILT DRAWINGS DATE: 26 JANUARY,2024

NOTES:

## COORDINATION PLAN

SECOND FLOOR  
AS BUILT DRAWING

Project Number	1002-27
----------------	---------

Date	26 JANUARY, 2024
------	------------------

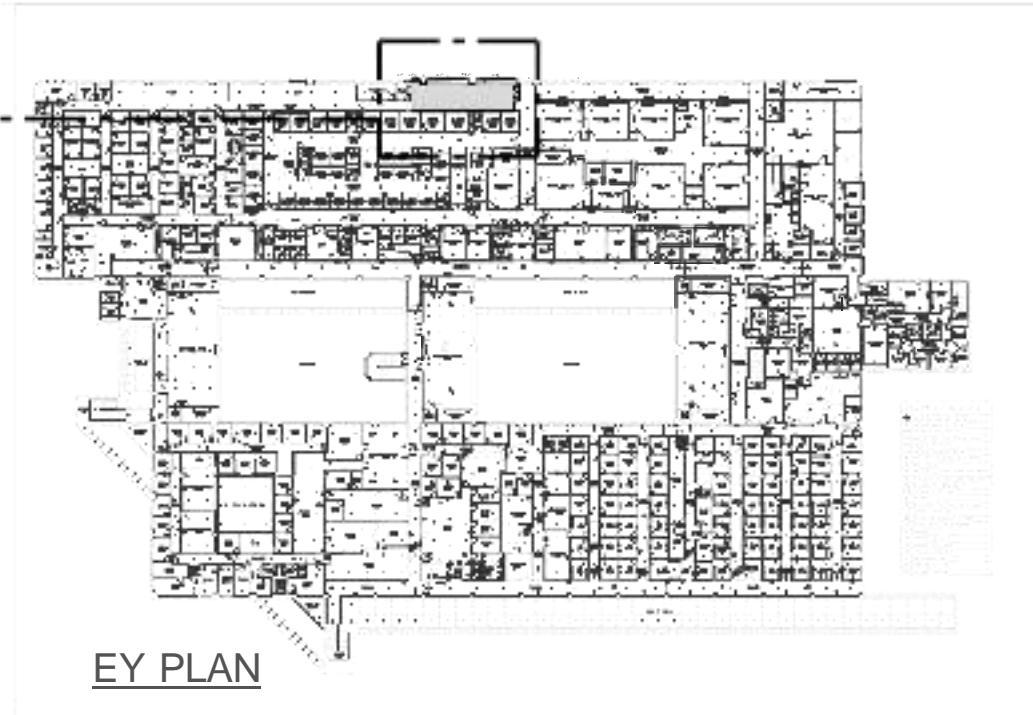
Drawn By	MA
----------	----

A-03

Scale	3/8"=1'-0"
-------	------------



AS-BUILT DRAWING

[illegible]

OWNER:

NELLIS AFB, NEVADA

99TH MEDICAL GROUP  
BUILDING 1300- AIR FORCE  
MEDICAL CENTER

GENERAL CONTRACTOR:

LICENSE NUMBER : B#81273

AS BUILT DRAWINGS DATE: 26 JANUARY,2024

NOTES:

# MECHANICAL PLAN

## SECOND FLOOR AS BUILT DRAWING

Project Number	1002-27
Date	26 JANUARY,2024
Drawn By	MA
Checked By	SA

<h1 style="margin: 0;">A-04</h1>	
Scale	$3/8" = 1'-0"$

## SECOND FLOOR PLAN

### LEGEND

RETURN AIR



DUCT



DOUBLE DOOR

## SECOND FLOOR FALSE CEILING PLAN

MECHANICAL PLAN

SECOND FLOOR  
AS BUILT DRAWING

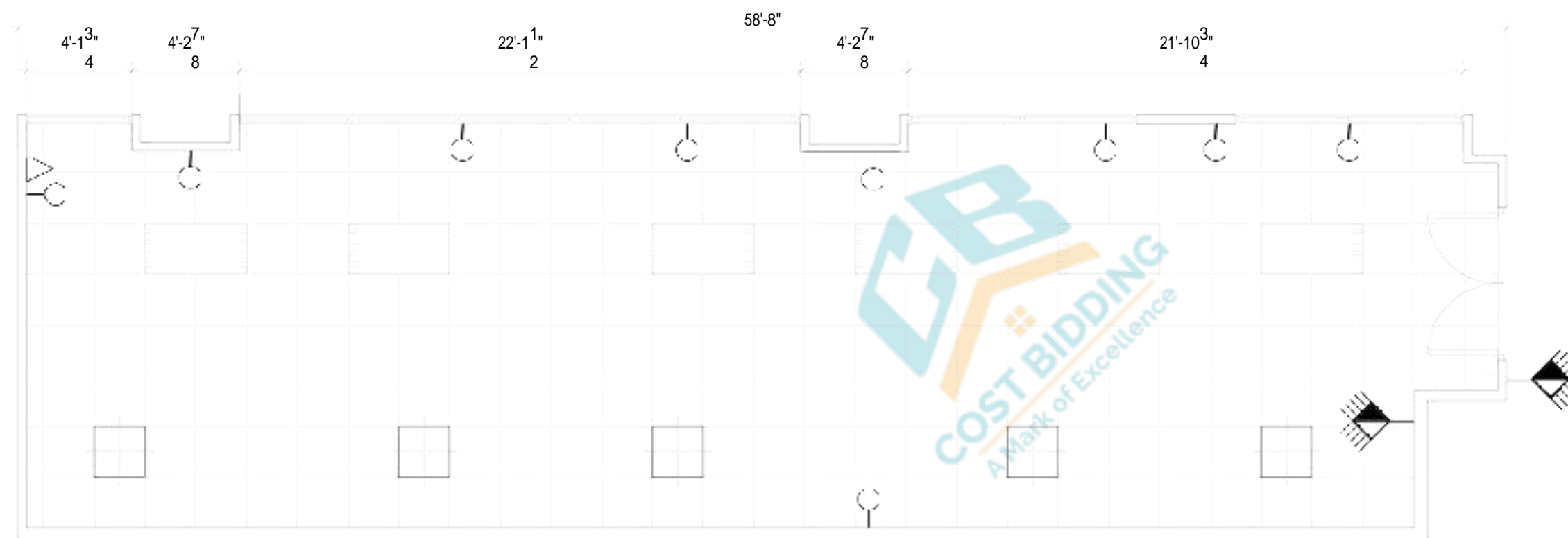
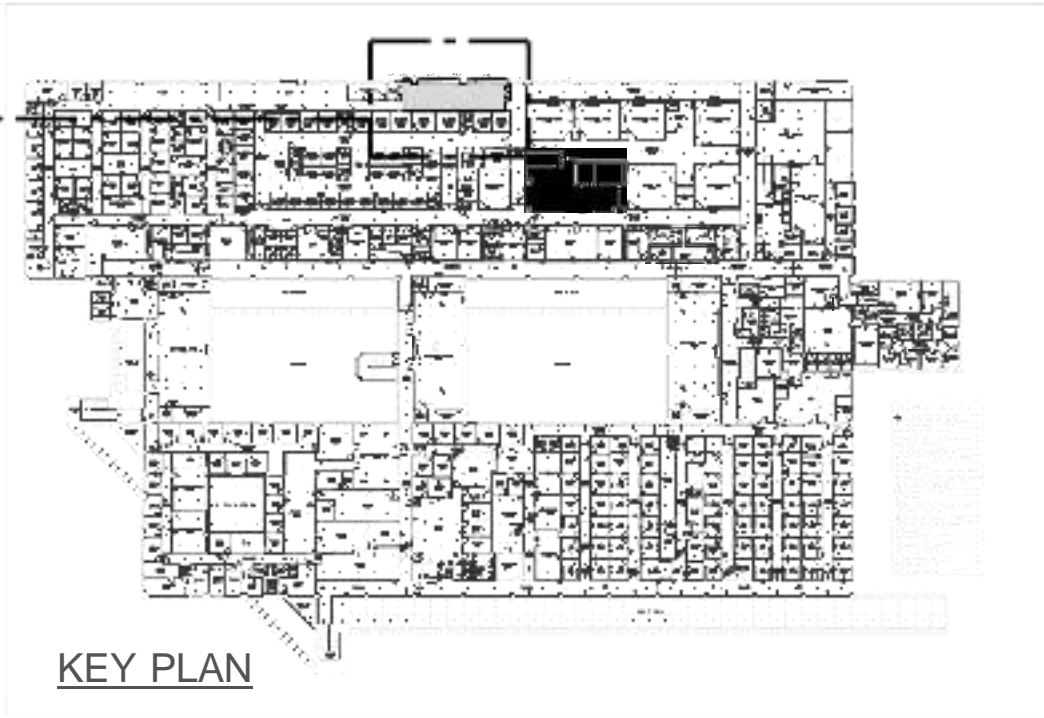
Project Number	1002-27
Date	26 JANUARY,2024
Drawn By	MA
Checked By	SA

A-04

Scale	3/8"=1'-0"
-------	------------



AS-BUILT DRAWING




SECOND FLOOR PLAN

LEGEND

- 2x2 LIGHT 
- ELECTRICAL OUTLET 
- 2X4 LIGHT 
- DATE OUTLET 
- WAIVE TO OPEN ACUATO 
- DOUBLE DOOR 

SECOND FLOOR  
FALSE CEILING PLAN

No.	Date
Description	
OWNER:	
NELLIS AFB,NEVADA	
99TH MEDICAL GROUP BUILDING 1300- AIR FORCE MEDICAL CENTER	
GENERAL CONTRACTOR:	
	
LICENSE NUMBER : B#81273	
AS BUILT DRAWINGS DATE: 26 JANUARY,2024	
NOTES:	
ELECTRICAL PLAN	
SECOND FLOOR AS BUILT DRAWING	
Project Number	1002-27
Date	26 JANUARY,2024
Drawn By	MA
Checked By	SA
A-05	
Scale	3/8"=1'-0"



AS-BUILT DRAWING



## KEY PLAN

[illegible]

OWNER:

NELLIS AFB, NEVADA

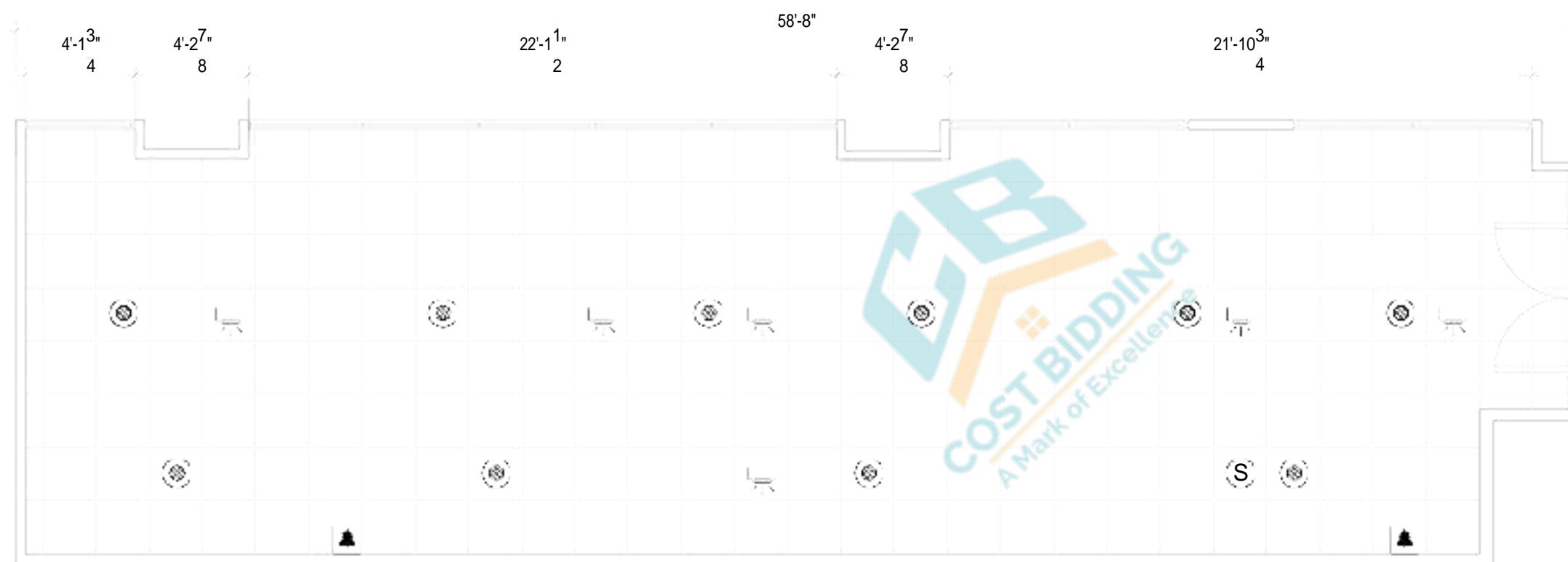
99TH MEDICAL GROUP  
BUILDING 1300- AIR FORCE  
MEDICAL CENTER

GENERAL CONTRACTOR:



LICENSE NUMBER : B#81273

AS BUILT DRAWINGS DATE: 26 JANUARY,2024



## SECOND FLOOR PLAN

### LEGEND

SPRINKLER 

SPEAKER 

FIRE ALARM 

FIRE ALARM 

DOUBLE DOOR

## SECOND FLOOR FALSE CEILING PLAN

NOTES:

## FIRE FIGHTING PLAN

SECOND FLOOR  
AS BUILT DRAWING

Project Number	1002-27
----------------	---------

Date	26 JANUARY, 2024
------	------------------

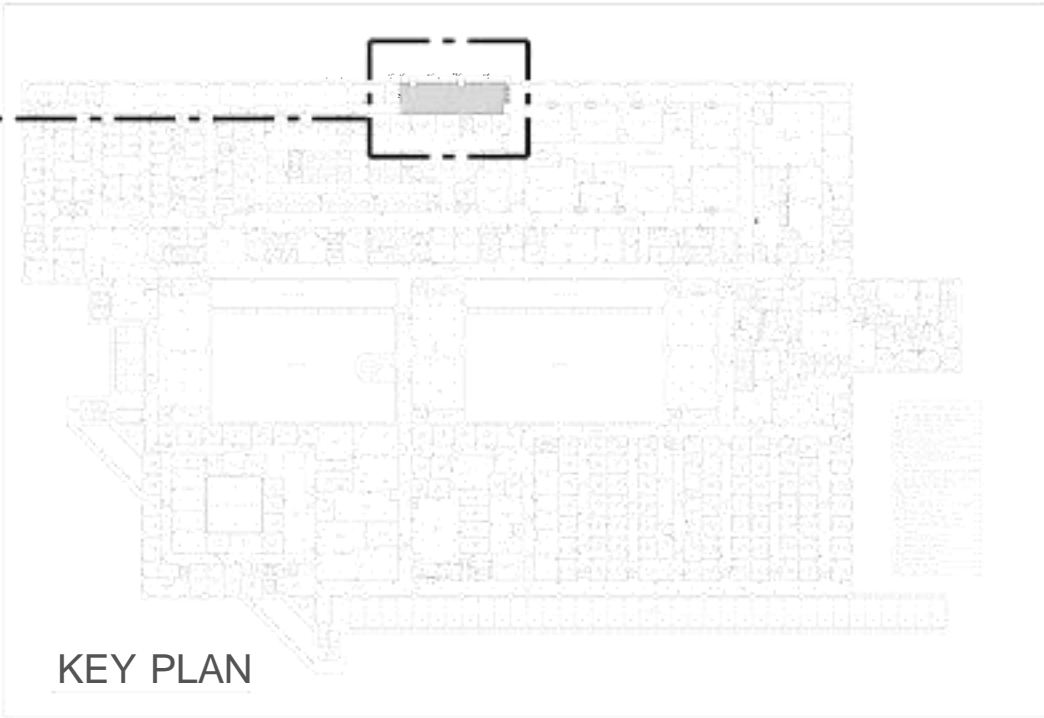
Drawn By	MA
----------	----

A-06

Scale	3/8"=1'-0"
-------	------------



AS-BUILT DRAWING



KEY PLAN



RUBBER FLOORING

FLOOR PLAN

SECOND FLOOR  
FLOOR PLAN

Date	
Description	
No.	

OWNER:

NELLIS AFB,NEVADA

99TH MEDICAL GROUP  
BUILDING 1300- AIR FORCE  
MEDICAL CENTER

GENERAL CONTRACTOR:



LICENSE NUMBER : B#81273

AS BUILT DRAWINGS DATE: 26 JANUARY, 2024

NOTES:

FLOOR PLAN

SECOND FLOOR  
AS BUILT DRAWING

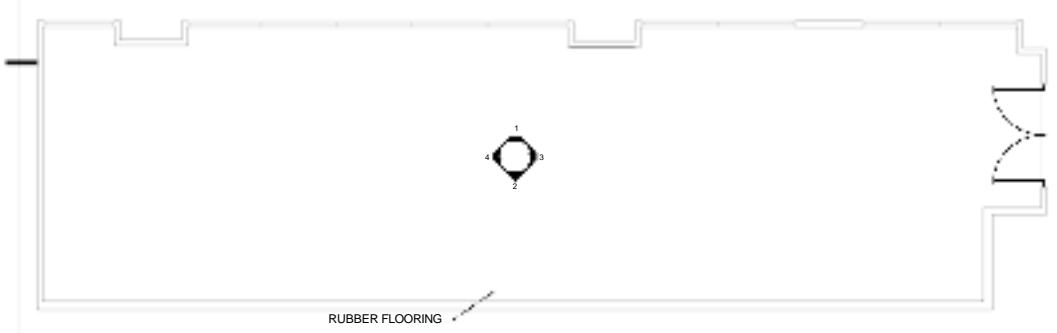
Project Number	1002-27
Date	26 JANUARY, 2024
Drawn By	MA
Checked By	SA

A-07

Scale	3/8"=1'-0"
-------	------------

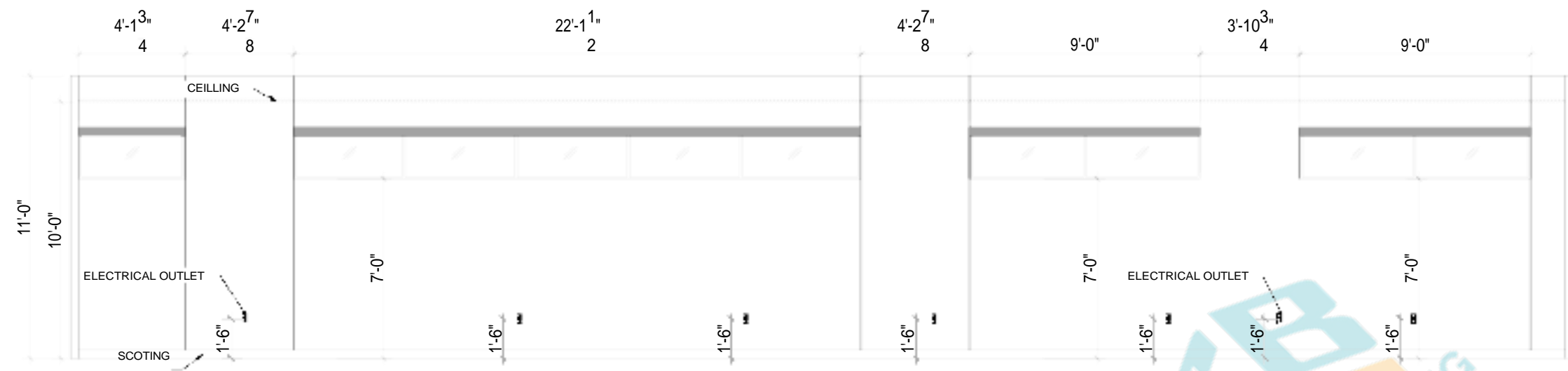


AS-BUILT DRAWING

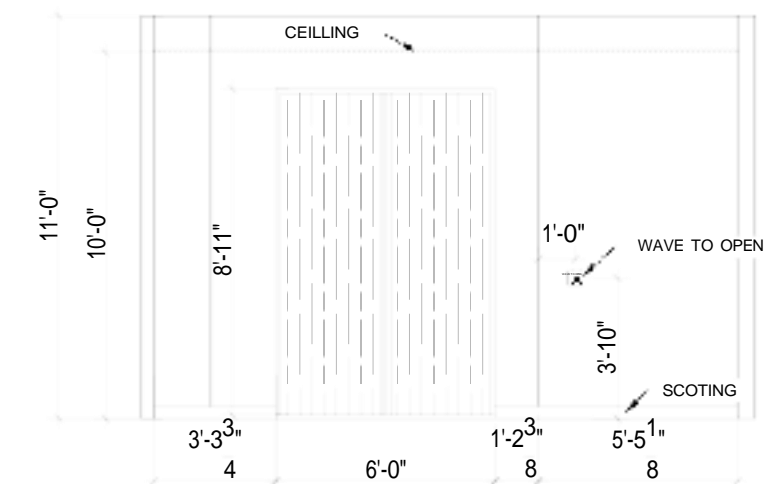


FLOOR PLAN

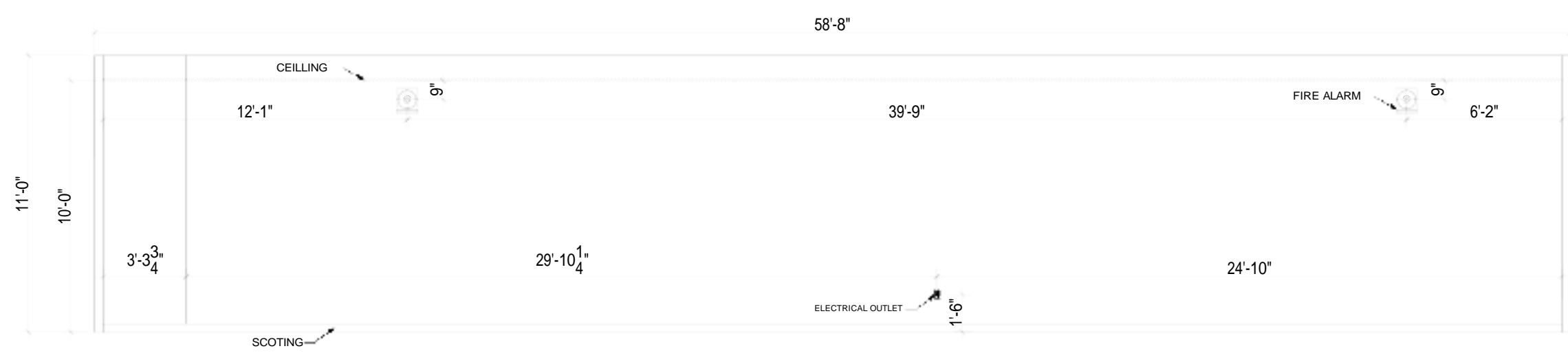
## KEY PLAN



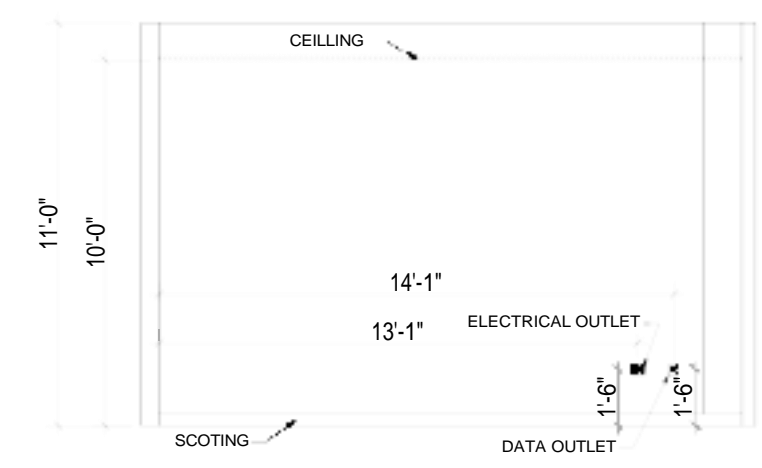
ELEVATION NO.01



ELEVATION NO.03



ELEVATION NO.02



ELEVATION NO.04

## SECOND FLOOR

### FLOOR PLAN

[illegible]

OWNER:

NELLIS AFB, NEVADA

99TH MEDICAL GROUP  
BUILDING 1300- AIR FORCE  
MEDICAL CENTER

GENERAL CONTRACTOR:



LICENSE NUMBER : B#81273

AS BUILT DRAWINGS DATE: 26 JANUARY, 2024

NOTES:

## ELEVATIONS

SECOND FLOOR  
AS BUILT DRAWING

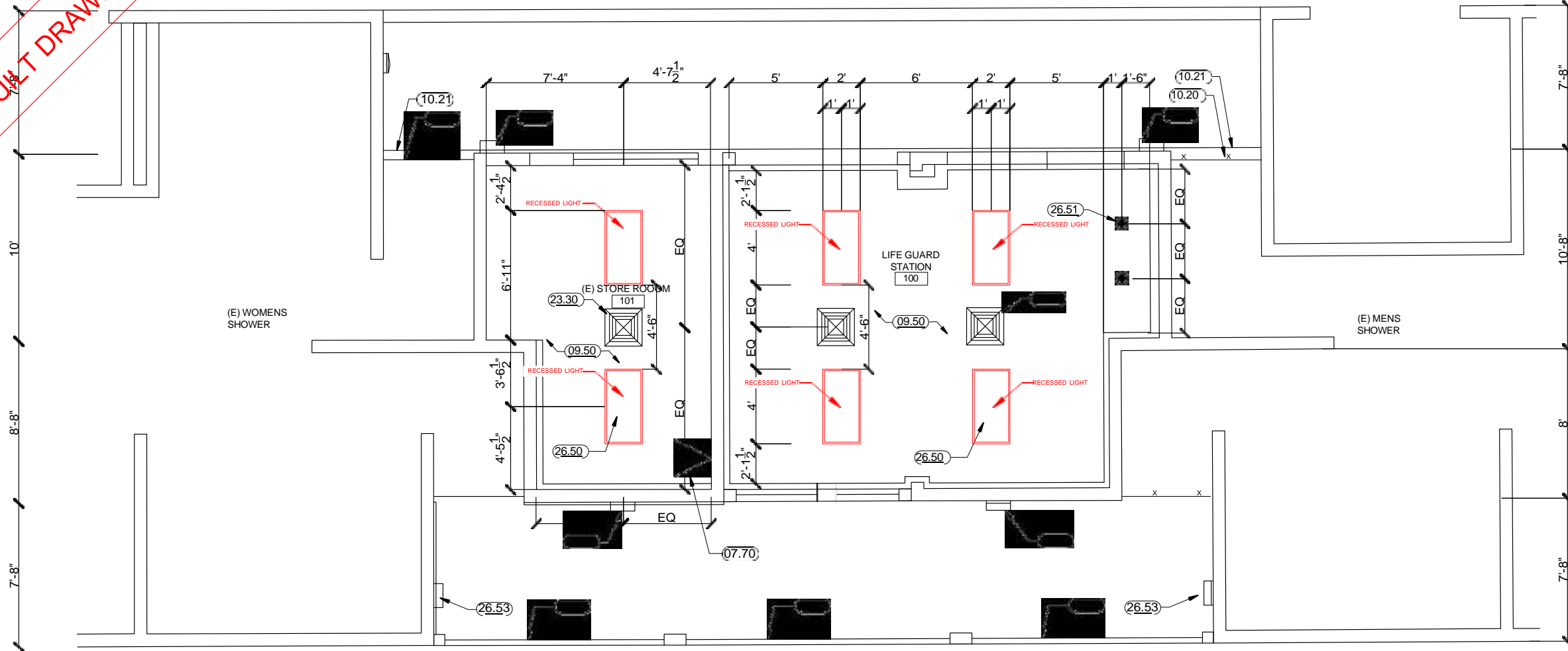
Project Number	1002-27
Date	26 JANUARY, 2024
Drawn By	MA
Checked By	SA

A-08

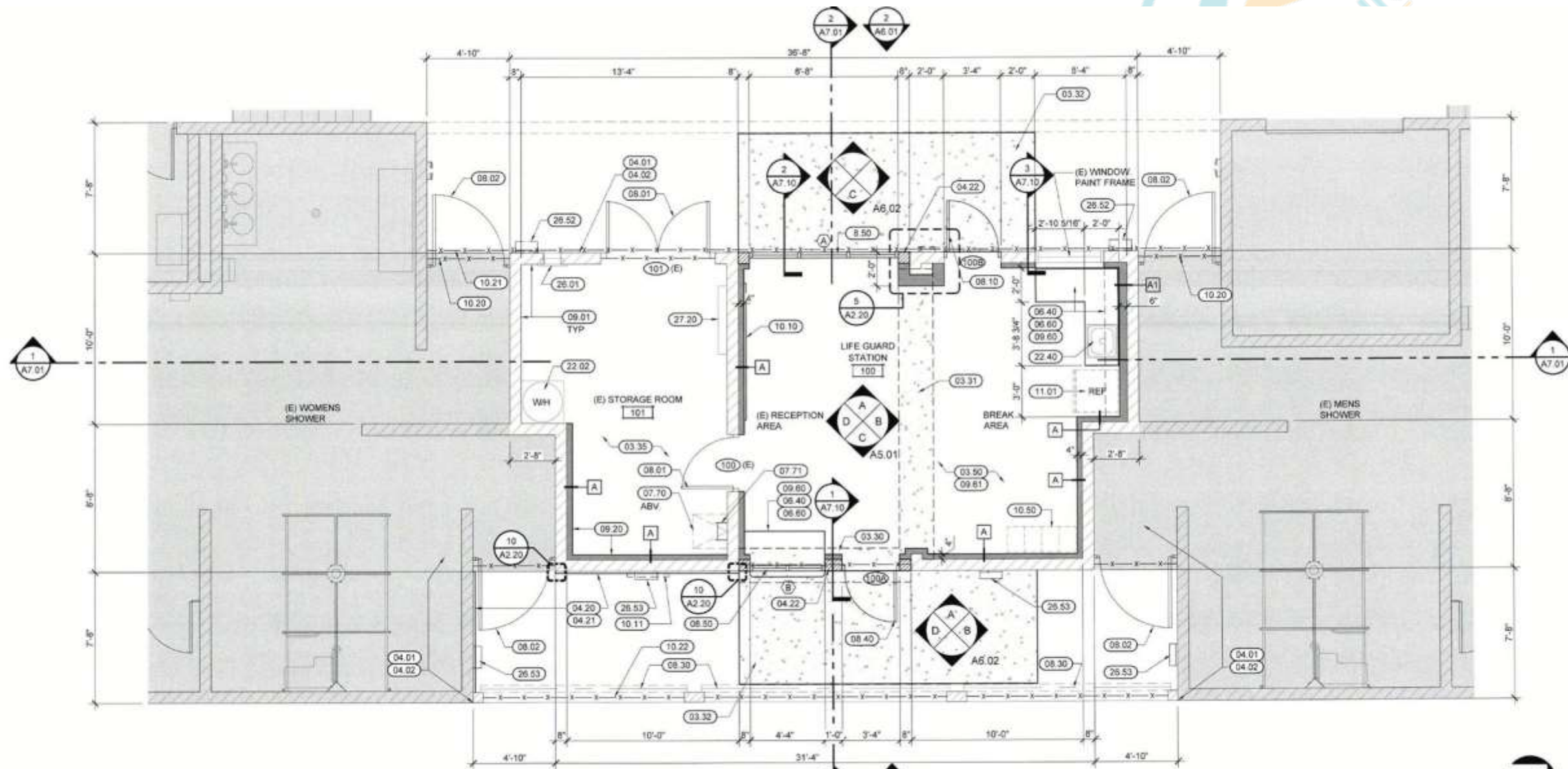
Scale	$3/8"=1'-0"$
-------	--------------



AS-BUILT DRAWING



2 REFLECTED CEILING PLAN  
SCALE: 1/4" = 1'-0"



1 FLOOR PLAN  
SCALE: 1/4" = 1'-0"

## PLAN SHEET NOTES

- REFER TO SHEET A0.01 & A0.02 FOR PROJECT GENERAL NOTES, ABBREVIATIONS & SYMBOLS.
- REFER TO SHEET A1.00 FOR MASTER KEYNOTE LIST.
- REFER TO SHEET A1.00 FOR FLOOR PLAN AND REFLECTED CEILING PLAN GENERAL NOTES. FLOOR PLAN GENERAL NOTES ARE APPLICABLE TO THIS SHEET.
- REFER TO ACCESSIBILITY DETAILS ON SHEETS ADA.01 THRU ADA.03 FOR ACCESSIBILITY INFORMATION.
- ALL DIMENSIONS ARE TO CENTERLINE OF COLUMN / GRID LINES AND FACE OF FRAMING / MASONRY / CONCRETE U.N.O.
- SEE PLANS FOR BUILDING DIMENSIONS.
- SEE EXTERIOR ELEVATIONS FOR COLORS, PATTERNS AND/OR TEXTURE.
- SEE ROOF PLAN FOR T.O.P. AND T.O.R. ELEVATIONS.
- PROVIDE POLYUREA CAULK FLOOR CONSTRUCTION JOINTS & TOOL JOINTS BETWEEN GRID LINES.
- SEAL ALL EXTERIOR CONCRETE PAVING CONTROLS, AND CONSTRUCTION JOINTS WITH SELF-LEVELING POURABLE POLYURETHANE.

## PLAN LEGEND

- |  |  |  |  |
|--|--|--|--|
|  | NEW WALL OR FURRED WALL                      |  | NEW DOOR AND DOOR FRAME                |
|  | NEW 8" CMU WALL                              |  | EXISTING DOOR AND DOOR FRAME TO REMAIN |
|  | EXISTING 8" FULLY GROUTED CMU WALL TO REMAIN |  | WIRE MESH                              |
|  | EXISTING WALL TO BE REMOVED                  |  | NOT IN CONTRACT                        |
|  | NEW CONCRETE WALKWAY                         |  |  |
|  | WALL TYPES TAG. SEE A2.20                    |  |  |

## FLOOR PLAN KEYNOTES

- DIVISION 3: CONCRETE**
  - NEW CONCRETE FOOTING/FOUNDATION. SEE STRUCTURAL DRAWINGS FOR ADDITIONAL INFORMATION.
  - NEW CONCRETE SLAB INFILL DOWELED INTO EXISTING CONCRETE SLAB. SEE DETAIL: 7/A2.20 AND STRUCTURAL DRAWINGS. INSTALL OVER VAPOR BARRIER TIED INTO EXISTING [07.24] / OVER 2" FINE SAND / OVER 6" TYPE II AGGREGATE / 85% COMPACTED SUBGRADE.
  - NEW CONCRETE FINISH AND EXPANSION AND CONTROL JOINTS AT NEW SLAB INFILL TO MATCH EXISTING PATTERNS IN FIELD. SEE DETAIL: 8/A2.20.
  - CONCRETE SEALER. CLEAN/REPARE FLOOR PER MANUFACTURERS RECOMMENDATIONS AND SPECIFICATIONS.
  - LEVEL FLOOR WITH HYDRAULIC CEMENT UNDERLAYMENT - PRIOR TO INSTALLATION OF RESINOUS FLOORING.
- DIVISION 4: MASONRY**
  - (E) GROUT TO BE REPAIRED ON EXTERIOR SIDE OF EXPOSED WALL. PRIOR TO PAINTING. REMOVE LOOSE AND DETERIORATED GROUT AND REPLACE WITH NEW MORTAR MATERIAL. COORDINATE WITH KN 04.02.
  - EXISTING CONCRETE UNIT MASONRY TO REMAIN. 8X8X16 - PRECISION ON EXTERIOR. EXPOSED SIDES - PROTECT-IN-PLACE. PATCH/REPAIR PER SPEC SECTION 04.01.20. SEAL W/ PENETRATING SEALER [07.11] AND PAINT PER PLAN. ON INTERIOR SIDE AT FURRED WALLS. PROVIDE W/M PER 07.22 PRIOR TO INSTALLATION OF FURRED WALL [09.20].
  - PRECISION (SMOOTH) CONCRETE MASONRY VENEER UNIT. 2X8X16 TO MATCH EXISTING. VENEER TO BE ANCHORED AND ADHERED TO EXISTING CMU PER SPEC SECTION 04.25.13. SEE DETAIL: 8/A2.20.
  - PRECISION (SMOOTH) CONCRETE MASONRY VENEER UNIT - SINGLE SCORE - 2X8X16. VENEER TO BE ANCHORED AND ADHERED TO EXISTING CMU. SEE DETAIL: 8/A2.20.
  - CONCRETE UNIT MASONRY - 8X8X16 - PRECISION CMU EXPOSED ON EXTERIOR SIDE. PROVIDE SINGLE SCORED UNITS WHERE SHOWN ON ELEVATIONS. PAINT PER PLAN.
- DIVISION 5: WOOD & PLASTICS**
  - PLASTIC-LAMINATE ARCHITECTURAL MILLWORK SEE SPEC. SECTION 06.41.19.
  - SOLID SURFACE COUNTERTOP. SEE SPEC. SECTION 06.81.16 COORDINATE WITH ARCHITECTURAL MILLWORK [06.40].
- DIVISION 6: THERMAL**
  - WATER REPELLANT / SEALANT.
  - THERMAL INSULATION - RIGID XPS (THK PER DETAILS ON PLAN).
  - WEATHER MEMBRANE BARRIER (BUILDING WRAP) ON INTERIOR FACE OF CMU BEHIND NEW FURRED WALLS. AT OPENINGS COORDINATE WITH KN 07.23.
  - 6" MIN LAP FLUID APPLIED AIR BARRIER. APPLY AT ALL OPENINGS IN ADDITION TO WEATHER MEMBRANE BARRIER. LAP ON INTERIOR SIDES OF JAMBS ONLY.
  - UNDERSLAB VAPOR BARRIER. SEE SPEC. SECTION: 07.26.00.
  - ROOF HATCH. SEE DETAIL: 30/A4.12.
  - ROOF LADDER AND SAFETY RAILS. SEE DETAIL: 33/A4.12.
- DIVISION 7: OPENINGS**
  - (E) H.M. DOOR, FRAME AND HARDWARE TO REMAIN. PROTECT-IN-PLACE. CLEAN, REMOVING ALL RUST, PREP AND REPAINT.
  - (E) STEEL PICKET GATES (OPEN AIR) TO REMAIN. CLEAN AND PREP. PROVIDE NEW PAINT FINISH.
  - HOLLOW METAL DOOR, FRAME AND HARDWARE. SEE DOOR SCHEDULE - SHEET A2.40.
  - (E) OVERHEAD COILERS TO REMAIN. PROTECT-IN-PLACE. NOTE: VERIFY OPERATIONAL AND MAINTAIN IN THAT CONDITION THROUGHOUT THE PROJECT.
  - ALUMINUM FRAMED STOREFRONT ENTRY DOOR - HEAVY DUTY-COMMERCIAL CLASS IN HOLLOW METAL FRAME.
  - ALUMINUM OR STEEL FIXED WINDOW PER PLAN - SEE WINDOW SCHEDULE SHEET A2.40. COORDINATE EXTERIOR INSTALLATION.
- DIVISION 8: FINISHES**
  - (E) WALL TO REMAIN. PATCH/REPAIR PRIOR TO PAINTING.
  - METAL BACKING IN WALL. SEE DETAIL: 26/A2.33 & 26/A2.33.
  - METAL FRAMED FURRED WALL WITH GYPSUM BOARD SUBSTRATE FINISH WITH 2.5-INCH XPS RIGID INSULATION [07.20]. CAVITY FILL. SEE WALL TYPES PER PLAN. PROVIDE PAINTED FINISH UNO.
  - 5/8" TYPE 'X' GYPSUM BOARD CEILING ON FURRING CHANNELS. REFER TO ROOM FINISH SCHEDULE AND A7.50 SHEET SERIES FOR DETAILS.
  - 4" HIGH RESILIENT RUBBER BASE AT MILLWORK.
  - RESILIENT RESINOUS EPOXY FLOORING - WITH INTEGRAL 6" COVE BASE. SEE SPEC SECTION 09.07.23 AND DETAILS ON SHEET: A8.02.
- DIVISION 9: SPECIALTIES**
  - 10'-0" X 4'-0" FIXED MARKERBOARD. PROVIDE BACKING. SEE KN [09.18].
  - REINSTALL EXISTING BRONZE PLAQUE.
  - (E) WIRE MESH ASSEMBLY TO REMAIN ABOVE DOORS. CLEAN AND PREP. PRIOR TO REPAINTING. PROTECT-IN-PLACE.
  - REINSTALL MODIFIED WIRE MESH ASSEMBLY REMOVED DURING DEMOLITION. SEE ORIGINAL INSTALLATION DETAILS ON SHEET A7.20 FOR RE-INSTALLATION.
  - (E) WIRE MESH ASSEMBLY TO REMAIN AT ENTRY ABOVE OVERHEAD COILERS. PROTECT-IN-PLACE.
  - CLEAN AND PAINT (E) METAL LOCKERS AND REINSTALL PER PLAN. COORDINATE AND PROVIDE BACKING IN WALL PER 09.18. ANCHOR LOCKERS TO WALL.
- DIVISION 10: EQUIPMENT**
  - REFRIGERATOR/FREEZER WITH ICE MACHINE (ICFIC). COORDINATE WATER CONNECTIONS WITH PLUMBING.
- DIVISION 11: PLUMBING**
  - REMOVE (E) WATER HEATER ON 4" CONCRETE HOUSEKEEPING PAD. DISCONNECT PIPING, DUCTS, CONDUIT/CONDUCTORS TO ALLOW FOR INSTALLATION OF ROOF/CEILING ASSEMBLY AND NEW WATER HEATER. REFER TO PLUMBING DRAWINGS.
  - STAINLESS STEEL-RIM MOUNTED SINK. SEE PLUMBING DRAWINGS.
- DIVISION 12: HEATING, VENTILATING, AND AIR CONDITIONING**
  - MECHANICAL SUPPLY / RETURN REGISTER. SEE MECHANICAL DRAWINGS.
- DIVISION 13: ELECTRICAL**
  - (E) ELECTRICAL PANEL TO REMAIN. REFER TO ELECTRICAL DRAWINGS.
  - 2X4 RECESSED LIGHT FIXTURE. SEE ELECTRICAL DRAWINGS.
  - 6" DIA. RECESSED DOWN LIGHT. SEE ELECTRICAL DRAWINGS.
  - (E) LIGHT FIXTURE TO REMAIN.
  - (E) LIGHT FIXTURE TO BE REMOVED AND REPLACED. SEE ELECTRICAL PLANS.
- DIVISION 14: COMMUNICATIONS**
  - (E) TELEPHONE / DATA BOARD TO REMAIN.

SPECIAL NOTE: THE FOLLOWING KEYNOTE LIST IS FILTERED FOR THIS SHEET. REFER TO SHEET A1.00 FOR MASTER KEYNOTE LIST AND FOR KEYNOTES THAT ARE NOT SHOWN ON LIST BELOW. REPETITIVE ELEMENTS AND ITEMS IDENTIFIED WITH KEYNOTES ARE NOT REDUNDANTLY ANNOTATED. AN ITEM WHICH OCCURS MULTIPLE TIMES MAY ONLY BE IDENTIFIED ONCE. THESE ANNOTATIONS ARE TO BE CONSIDERED TYPICAL.

Date	
Description	
No.	

OWNER:



CITY OF LAS VEGAS

GENERAL CONTRACTOR:



AS-BUILT DRAWINGS DATE: 19 SEPTEMBER, 2023

NOTES:

## CLV-FREEDOM PARK POOL LIFE GUARD RENOVATION

3106 E WASHINGTON  
AVENUE

## FLOOR PLAN AND REFLECTED CEILING PLAN

Project Number	21096
Date	19 September, 2023
Drawn By	SA
Checked By	SM

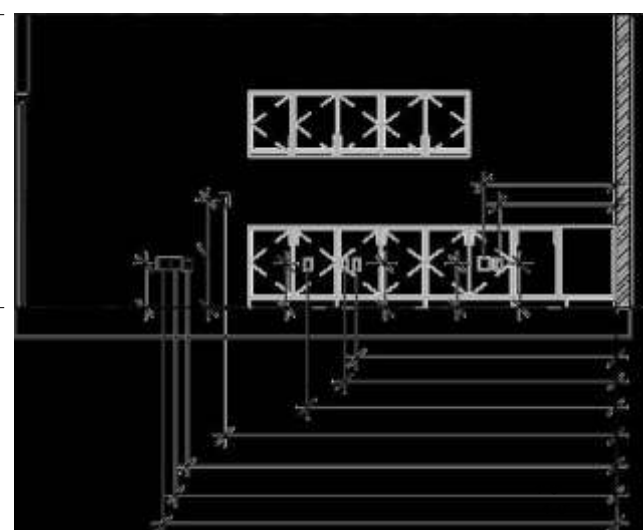
A-2.01

Scale	1/4" = 1'-0"
-------	--------------



Architectural floor plan of a room with numbered callouts 1 through 19. The plan shows a rectangular room with a central square feature, a door on the right wall, and various furniture and fixtures. Dimensions are provided for several areas: 8'-10", 9'-3", 10'-6", 13'-4", 14'-7", 15'-0", 15'-5", 8'-10", 9'-6", 14'-6", and 10'-0". The walls are labeled with numbers 1 through 19.

23	6	
6'-5"	08	
		6'-10"
		7'-9"
		9'-1"



1'-6"

1'-6"

1'-6"

1'-6"

1'-6"

8'-10"

9'-3"

10'-6"

13'-4"

14'-7"

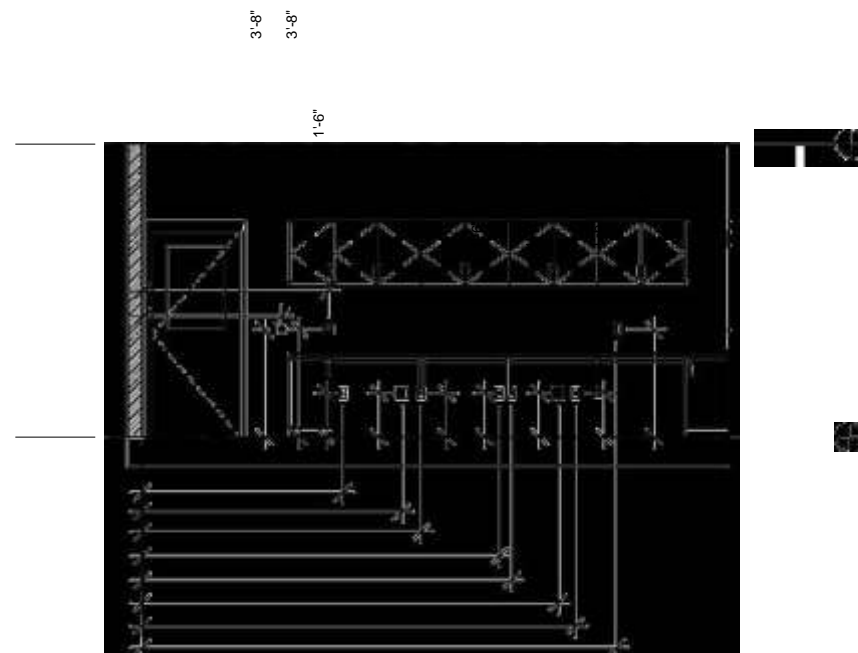
15'-0"

15'-5"

15'-5"

15'-5"

15'-5"



1'-0"

1'-0"

14'-2"

14'-9"

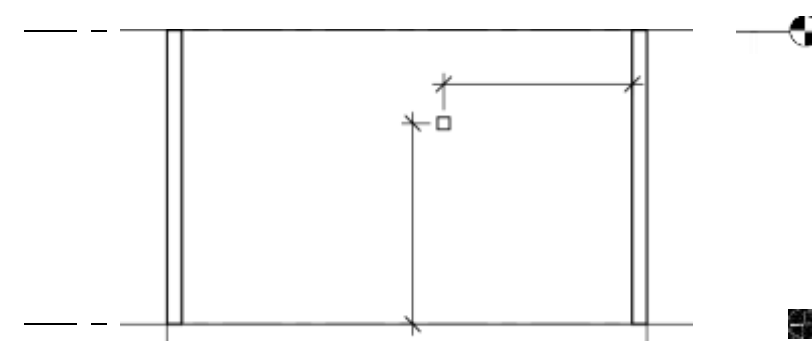
16'-2"

4 ELECTRICAL WEST WALL

1/4" = 1'-0"



Level 1  
0<sup>+</sup>



7	DUPLEX OUTLET	12"-7"	1'-6"
8	QUAD OUTLET	14"-2"	1'-6"
9	DATA JACK	14"-9"	1'-6"
10	SWITCH/DUPLEX OUTLET	16"-2"	3'-8"
11	QUAD OUTLET	15'-5"	1'-6"
12	QUAD OUTLET	15'-0"	1'-6"
13	DATA JACK	14"-7"	1'-6"
14	SINGLE SWITCH	13'-4"	3'-8"
15	DUPLEX OUTLET	10'-6"	1'-6"
16	DATA JACK	9'-3"	1'-6"
17	DUPLEX OUTLET	8'-10"	1'-6"
18	QUAD OUTLET	4'-6"	1'-6"
19	DATA JACK	4'-0"	1'-6"
20	DUPLEX OUTLET (FROM CORNER #2)	4'-0"	1'-6"
21	DUPLEX OUTLET (FROM CORNER #2)	7'-9"	1'-6"
22	DATA JACK (FROM CORNER #2)	9'-1"	1'-6"
23	FIRE ALARM (FROM CORNER #2)	6'-5"	1'-6"

OFFICE: (+1) 702-774-8658  
University of Nevada, Las Vegas  
4505 S. Maryland Pkwy.  
Las Vegas, Nevada 89154  
P 702.895.3011

UNLV



Red Mesa Electric

AS BUILT DATE : 11 JANUARY 2024

NOTES :